



FIXTURE ACCESSORIES

Imprint

Publisher:

ATX Hardware GmbH West

Am Wiesengrund 12

86932 Pürgen

Germany

Phone +49 8196 9304-0

Fax + 49 8196 9304-19

E-Mail: projects@atx-hardware.de

Web: www.atx-hardware.de

SPECIALIST FIXTURE SOLUTIONS

ATX is Europe's market leader in the manufacture of test fixtures for electronic test procedures.

Why you too should choose an ATX fixture - it's simple:

TECHNICAL KNOW-HOW

Our sales team is technically well versed - our consultants are selected from the design team or other technical departments.

PROJECT KNOW-HOW

We work together with you towards a common goal: to find and implement the optimal solution for your individual testing requirements.

KNOWLEDGE BASE

Our employees bring well over 1,000 man-years of fixture building experience to the team.

SINCE 1997

FIXTURE ACCESSORIES

PUSH FINGER / ALUMINIUM



Order number	Designation
433101	NH - 12 mm
433102	NH - 20 mm
433103	NH - 25 mm
433104	NH - 30 mm
433105	NH - 35 mm
433106	NH - 40 mm
433107	NH - 45 mm
433108	NH - 50 mm

PUSH FINGER / STAINLESS STEEL



Order number	Designation
433214	NH - S3 - 20 mm
433215	NH - S3 - 25 mm
433216	NH - S3 - 30 mm
433217	NH - S3 - 35 mm
433218	NH - S3 - 40 mm
433219	NH - S3 - 45 mm
433220	NH - S3 - 50 mm
433221	NH - S3 - 55 mm
433231	NH - S3 - 60 mm

FIXTURE ACCESSORIES

SPACER

(Spacer and Tip for NH-Aluminium)



Order number	Designation
439003	Spacer 3 x 2,5 mm

PUSH FINGER / GFK-TIP

(Tip for NH-stainless steel)



Order number	Designation
433200	NH - S3 - Tip - 10 mm (GFK) D=1,5 mm

PUSH FINGER / GFK



Order number	Designation
433113	NH - S4 - R Rectangular Push Finger for NH 12

PUSH FINGER / PLASTIC



Order number	Designation
433081	NH - S6 - K45 - 45 mm
433090	NH - S6 - K50 - 50 mm

SPECIAL PUSH FINGER



Order number	Designation
433111	NH - S5 - 12 Special Push Finger 12 mm

PUSH FINGER EGS619 / GFK



Order number	Designation
433096	NH E90-50776 - 1,5 mm

PILOT BOLT



Order number	Designation
335012	d=11.9 l=15 mm, Cone shape 1.4301 stainless steel
335004	d=12 l=35 mm SW10 1.4305 stainless steel

PILOT BOLT POM



Order number	Designation
335003	d=12 l=15 mm SW10 POM with screw M3x16

FIXTURE ACCESSORIES

SILICON FOAM ROUND



Order number	Designation
455002	Silicon foam round cord 3mm

MUSHROOM GRIP (with threaded sleeve)



Order number	Designation
494001	Mushroom grip

VACUUM HOSE



Order number	Designation
498012	Vacuum hose
498010	Connecting part (Y-piece)

BOARD MARKER PROBE



Order number	Designation
549001	BMP1 Board marker probe

PNEUMATIC COUPLING (basic unit)



Order number	Designation
278256	Pneumatic interface HAN module female 3 mm

PNEUMATIC COUPLING (cassette)



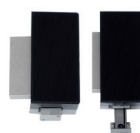
Order number	Designation
278255	Pneumatic interface HAN module male 3 mm

VACUUM PORT (vacumm fixture)



Order number	Designation
109649	Vacuum port for ATX Pylon fixture

SIDE ACCESS MECHANIC



Order number	Designation
109731	Side access mechanic for simultaneous contacting of the side plugs with the hub of the moving plate. hub=8 mm

FIXTURE ACCESSORIES

PRESSURE SPRING VACUUM



Order number	Designation
440045	Standard pressure spring $D_e=13,0$ $LO=15,0$ $nt=5,0$ $d=1,4$
440002	Pressure spring Bi-Level $D_e=13,0$ $LO=19,0$ $nt=5,0$ $d=1,4$

CONE PRESSURE SPRING



Order number	Designation
440027	Cone pressure spring 1,5 - 9,7 bis 18 - 14
440035	Cone pressure spring 1 - 6,2 bis 19,5 - 18

LOXX-TOP



Order number	Designation
283021	Top part with bracket, without washer, LO-41B

DU-BUSHING

(Guide for pin plate)



Order number	Designation
445012	DU-Bushing

PRESSURE SPRING HPP



Order number	Designation
440031	Pressure spring 0,9 - 9,9 - 16,5
440032	Pressure spring 0,9 - 9,9 - 19,5
270746	Pressure spring 0,9 - 0,9 - 14,8

REED SWITCH



Order number	Designation
496003	Reed switch NO (two connections)
496004	Reed switch UM (three connections)

LOXX-SPACER WASHER



Order number	Designation
480467	Spacer washer for LOXX E90-50748

SET DU-BUSHING

(Guide for pin plate)



Order number	Designation
445015	DU-Bushing for Bi-Level

FIXTURE ACCESSORIES

MAGNET



Order number	Designation
499013	Magnet without clamp d=7,6 h=2,7

U-SHAPE HOLD



Order number	Designation
330075	U-shape hold d=5 l=88

STROKE COUNTER



Order number	Designation
263282	Stroke counter

PUT UP HINGE / COVER OPEN LIMITER



Cover open limiting

Order number	Designation
334002	Put up hinge, long (10-fold)
334001	Put up hinge, short (5-fold)
480956	Cover open limiting parts, E90-03285

GUIDING BOLT



Order number	Designation
426003	Standard
426001	Bi-Level

GUIDING BOLT



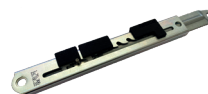
Order number	Designation
426011	Standard
426010	Bi-Level

BI-LEVEL MOTOR



Order number	Designation
109604	Bi-level motor 6 V
109613	Bi-level motor 12 V
109674	Bi-level motor 24 V

LOCK FOR PUT UP HINGE



E90-03283 E90-03284

Bestellnummer	Bezeichnung
480954	Put up Hinge Lock 2-Phase, E90-03283
480955	Put up Hinge Lock 3-Phase, E90-03284

FIXTURE ACCESSORIES

RF KNIT-SHIELD SEALING



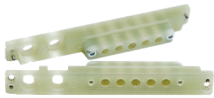
Order number	Designation
454033	Knit-Shield, Ø ca. 6 mm RF knit-shield sealing 2006

CONTACT SPRING STRIP



Order number	Designation
454032	Contact spring strip Form S, Strength: 0,10 mm

COMBI INTERFACE MODULE (basic unit)



Order number	Designation
100837	MEWG - IF - combi interface module Pneu-HF-HS

COMBI INTERFACE MODULE (cassette)



Order number	Designation
100838	MEWK - IF - combi interface module Pneu-HF-HS

INTERFACE CONTACT (basic unit)



Order number	Designation
101418	Interface contact (Pin & Receptacle)

INTERFACE CONTACT (cassette)



Order number	Designation
670054	Interfacepin KT-158

HIGH-CURRENT CONTACT (basic unit)



Order number	Designation
629001	High-current pyramide HSS-150 317 300 A 3002
689037	High-current receptacle 50 A KS-150 30

HIGH-CURRENT CONTACT (cassette)



Order number	Designation
670034	Interfacepin IK Löt 50 A KT-150 L3 E03-M3

FIXTURE ACCESSORIES

HIGH-FREQUENCY CONTACT (basic unit)



Order number	Designation
300049	Mini Coax Receiver RG178 incl. cabel (90cm)

HIGH-FREQUENCY CONTACT (cassette)



Order number	Designation
300044	Coax-contact incl. cabel CF-MCA50RG174-36

HOUSING HINGE



Order number	Designation
331001	Hing 50 x 31 x 1,2 black

ESD-TRANSFER MMIWG



Order number	Designation
639022	High-current pyramide 160mil HSS-120317300 A 1510
689064	High-current receptacle KS-113 30

GAS SPRING



Order number	Designation
443001	20 mm Hub 50 N 4829DF
443002	40 mm Hub 50 N 4846DI
443003	40 mm Hub 100 N 4848DZ
443004	40 mm Hub 150 N 4851DA
443005	60 mm Hub 50 N 4862DQ
443024	60 mm Hub 50 N 192848 L=185,5 mm
443006	60 mm Hub 100 N 4534DS
303015	60 mm Hub 100 N 192856 L=185 mm
443007	60 mm Hub 150 N 4904DI
443008	80 mm Hub 50 N 4915DY

Order number	Designation
443009	80 mm Hub 100 N 4917DO
443010	120 mm Hub 50 N 5025DT
443011	120 mm Hub 100 N 5027DJ
443012	120 mm Hub 150 N 5031DG
443013	150 mm Hub 100 N 5075DQ
443014	150 mm Hub 150 N 5077DG
443015	150 mm Hub 200 N 1562DH
443016	40 mm Hub 200 N 1338DJ
443018	150 mm Hub 50 N 5072DE

FIXTURE ACCESSORIES

TOOLING PIN HARDENED (with thread)



Order number	Designation
425068	hardened 1,9 x 6
425040	hardened 2,0 x 6
425038	hardened 2,1 x 6
425044	hardened 2,2 x 6
425032	hardened 2,3 x 6
425043	hardened 2,4 x 6
425042	hardened 2,5 x 6
425045	hardened 2,6 x 6
425046	hardened 2,7 x 6
425033	hardened 2,8 x 6
425039	hardened 2,9 x 6
425034	hardened 3,0 x 6
425041	hardened 3,1 x 6
425047	hardened 3,2 x 6
425048	hardened 3,3 x 6
425049	hardened 3,4 x 6
425035	hardened 3,5 x 6
425050	hardened 3,6 x 6
425051	hardened 3,7 x 6
425052	hardened 3,8 x 6
425053	hardened 3,9 x 6
425036	hardened 4,0 x 6
425054	hardened 4,1 x 6
425055	hardened 4,2 x 6
425056	hardened 4,3 x 6
425057	hardened 4,4 x 6
425058	hardened 4,5 x 6
425059	hardened 4,6 x 6
425060	hardened 4,7 x 6
425061	hardened 4,8 x 6
425062	hardened 4,9 x 6
425037	hardened 5,0 x 6

TOOLING PIN (elementary)



Order number	Designation
425001	elementary 2,0 x 3
425002	elementary 2,1 x 3
425003	elementary 2,2 x 3
425004	elementary 2,3 x 3
425005	elementary 2,4 x 3
425006	elementary 2,5 x 3
425007	elementary 2,6 x 3
425008	elementary 2,7 x 3
425009	elementary 2,8 x 3
425010	elementary 2,9 x 3
425011	elementary 3,0 x 3
425012	elementary 3,1 x 3
425013	elementary 3,2 x 3
425014	elementary 3,3 x 3
425015	elementary 3,4 x 3
425016	elementary 3,5 x 3
425017	elementary 3,6 x 3
425018	elementary 3,7 x 3
425019	elementary 3,8 x 3
425020	elementary 3,9 x 3
425021	elementary 4,0 x 3
425022	elementary 4,1 x 3
425023	elementary 4,2 x 3
425024	elementary 4,3 x 3
425025	elementary 4,4 x 3
425026	elementary 4,5 x 3
425027	elementary 4,6 x 3
425028	elementary 4,7 x 3
425029	elementary 4,8 x 3
425030	elementary 4,9 x 3
425031	elementary 5,0 x 3

FIXTURE ACCESSORIES

MMI STIFFENING BAR (1 pc)



Order number	Designation
264012	MMI stiffening bar drawing no. E90-01304, Hornitex 10 mm

MMI STIFFENING BARS (2 pcs)



Order number	Designation
109761	MMI stiffening bar, 2pcs drawing no. E90-01304, Hornitex 10 mm

MMI STARTER PACKAGE



Order number	Designation
109762	20x push finger 50 mm 433108 20x spacer 439003 4x pilot bolt stainless steel 335012

MMI STARTER PACKAGE HIGH (114,5 mm)



Order number	Designation
109763	20x push finger 110 mm 4x push finger 114,5 mm 20x spacer 439003 4x pilot bolt stainless steel 335012

ALUMINIUM STIFFENING BAR (for MMI2-series and ME2-series)



Order number	Designation
264328	Aluminium stiffening bar drawing no. E90-03108

ROUND SEALING



Order number	Designation
120340	Round sealling E06-00004 on moving plate (D=14 mm, d=8 mm, H=1,8 mm)

INSERTION TOOL



Order number	Designation
928026	Insertion tool 40 mil for KS-040 adjustable
928004	Insertion tool 50 mil for KS-050 adjustable
927003	Insertion tool 75 mil for ARIT-1M adjustable
927002	Insertion tool 100 mil for ARIT-25M adjustable
102314	ATX Insertion tool for 50, 75 and 100 mil, turned off on both sides
480286	Insertion tool for spacer 3x2,5 mm

FIXTURE ACCESSORIES

MMI STIFFENING BAR (1 pc)



Order number	Designation
264012	MMI stiffening bar drawing no. E90-01304, Hornitex 10 mm

MMI STIFFENING BARS (2 pcs)



Order number	Designation
109761	MMI stiffening bar, 2pcs drawing no. E90-01304, Hornitex 10 mm

MMI STARTER PACKAGE



Order number	Designation
109762	20x push finger 50 mm 433108 20x spacer 439003 4x pilot bolt stainless steel 335012

MMI STARTER PACKAGE HIGH (114,5 mm)



Order number	Designation
109763	20x push finger 110 mm 4x push finger 114,5 mm 20x spacer 439003 4x pilot bolt stainless steel 335012

ALUMINIUM STIFFENING BAR (for MMI2-series and ME2-series)



Order number	Designation
264328	Aluminium stiffening bar drawing no. E90-03108

ROUND SEALING



Order number	Designation
120340	Round sealling E06-00004 on moving plate (D=14 mm, d=8 mm, H=1,8 mm)

INSERTION TOOL



Order number	Designation
928026	Insertion tool 40 mil for KS-040 adjustable
928004	Insertion tool 50 mil for KS-050 adjustable
927003	Insertion tool 75 mil for ARIT-1M adjustable
927002	Insertion tool 100 mil for ARIT-25M adjustable
102314	ATX Insertion tool for 50, 75 and 100 mil, turned off on both sides
480286	Insertion tool for spacer 3x2,5 mm

FIXTURE ACCESSORIES

SIDE PRESSURE PIECE (Test specimen clamp)



Order number	Designation
442080	Side pressure piece GN415-ZD-22-A1-KG-1



ATX HARDWARE GMBH WEST

Location Pürgen | Am Wiesengrund 12 | 86932 Pürgen
Location Weil im Schönbuch | Carl-Zeiss-Straße 5/1 | 71093 Weil im Schönbuch

P +49 8196 9304-0
F +49 8196 9304-19
projekte@atx-hardware.de

www.atx-hardware.de